

oakheart



£350,000

Offers In Excess Of  
Strood Close, West Mersea



This well-presented two-bedroom semi-detached bungalow is located in the sought-after Anchorage area of Strood Close, offering a perfect blend of comfort, space, and convenience. Tastefully maintained throughout, the property boasts an impressive extension off the lounge that opens into a generously sized family room, ideal for both relaxing and entertaining. This added space floods the interior with natural light and provides a seamless flow between living and dining areas.

The accommodation comprises two good-sized bedrooms, a bright and welcoming lounge, and a modern fitted kitchen, all finished to a high standard. The layout has been thoughtfully designed to maximise both space and functionality, making it a practical choice for a variety of buyers, from downsizers to small families.

Outside, the property benefits from off-road parking, ensuring easy access and convenience. The bungalow sits in a quiet,

residential setting within a well-regarded neighbourhood, with local amenities, transport links, and schools all within easy reach.

With its extended living space, excellent presentation, and desirable Anchorage location, this charming bungalow represents a rare opportunity to secure a spacious home in a popular part of Strood Close.







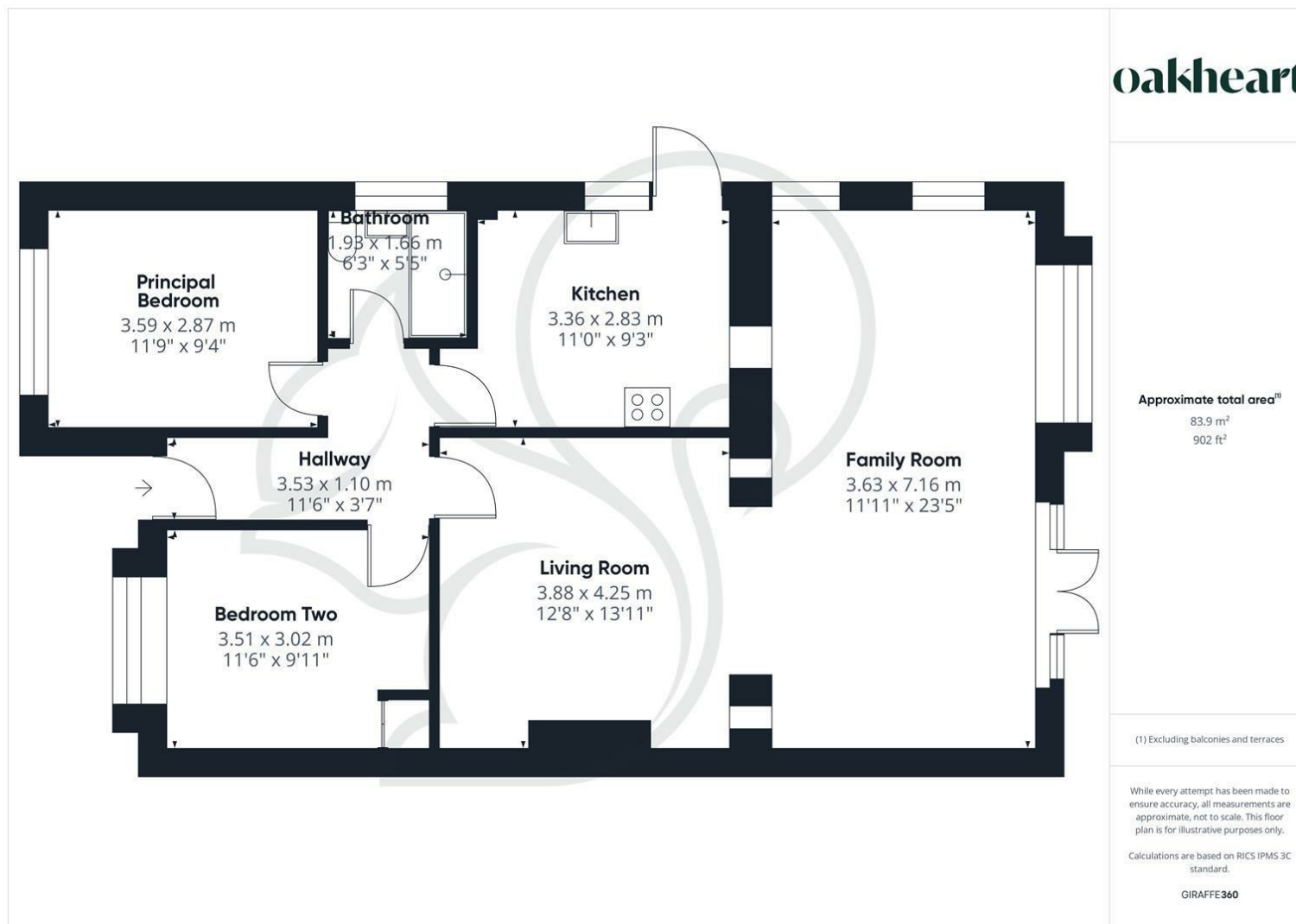













Local Authority:  
Colchester

Tenure:  
Freehold

Council Tax Band:  
B

### Energy Efficiency Rating

	Current	Potential
Very energy efficient - lower running costs		
(92 plus) <b>A</b>		
(81-91) <b>B</b>		<b>84</b>
(69-80) <b>C</b>		
(55-68) <b>D</b>	<b>65</b>	
(39-54) <b>E</b>		
(21-38) <b>F</b>		
(1-20) <b>G</b>		
Not energy efficient - higher running costs		
<b>England &amp; Wales</b>		
	EU Directive 2002/91/EC 	

Agents Note: Whilst every care has been taken to prepare these particulars, they are for guidance purposes only. All measurements are approximate and are for general guidance purposes only and whilst every care has been taken to ensure their accuracy, they should not be relied upon.

Oakheart Mersea  
01206 382191  
mersea@oakheart.co.uk  
34a Barfield Rd, West Mersea, Colchester, Essex, CO5 8QT

**oakheart**